

**NEW YORK STATE DEPARTMENT OF HEALTH
AIDS INSTITUTE**

**eHIVQUAL
QUALITY OF CARE *INDICATOR ALGORITHMS***

AN APPENDIX TO THE INDICATOR DEFINITIONS GUIDE

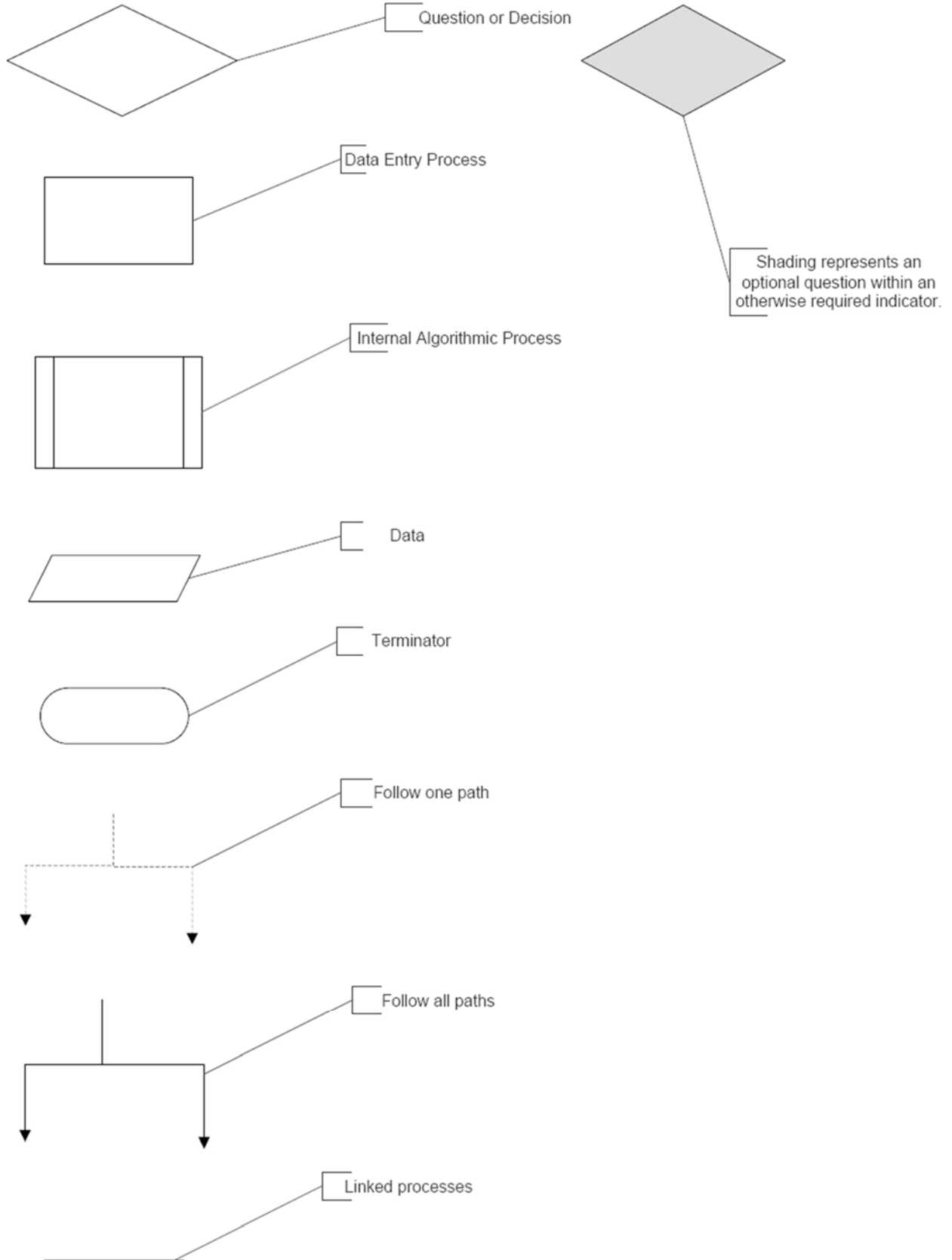
***REVIEW PERIOD:
CALENDAR YEAR 2016 (1/1/2016 – 12/31/2016)***

TABLE OF CONTENTS

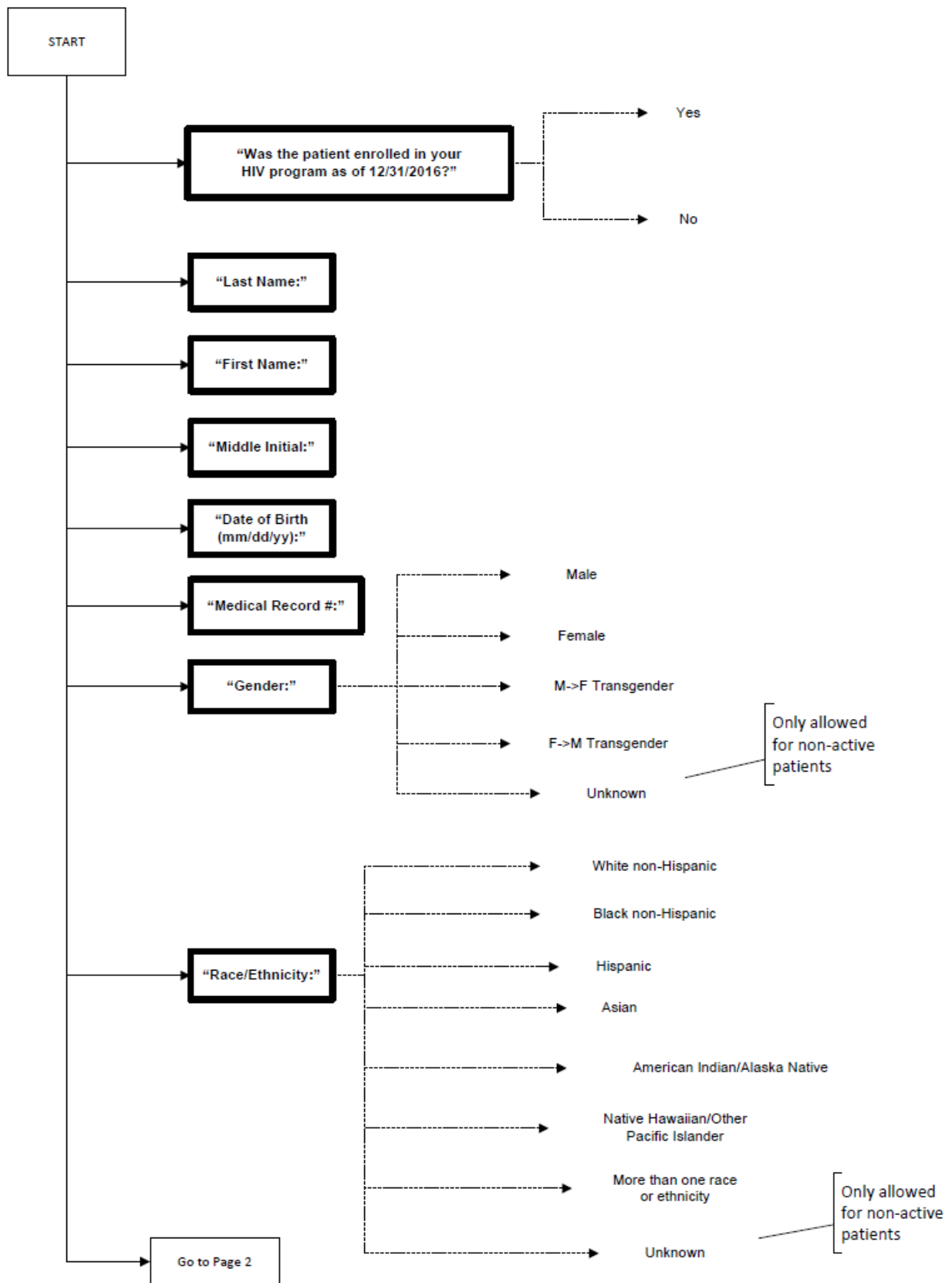
| Resource | Location |
|--|-----------------------|
| Algorithm Key | Page 3 |
| Patient Characteristics Algorithm | Pages 4 and 5 |
| Patient Profile Algorithm (including ARV therapy) | Pages 6 and 7 |
| HIV Monitoring (including viral load suppression) | Page 8 |
| Sexually Transmitted Infections Algorithm | Page 9, 10, 11 and 12 |

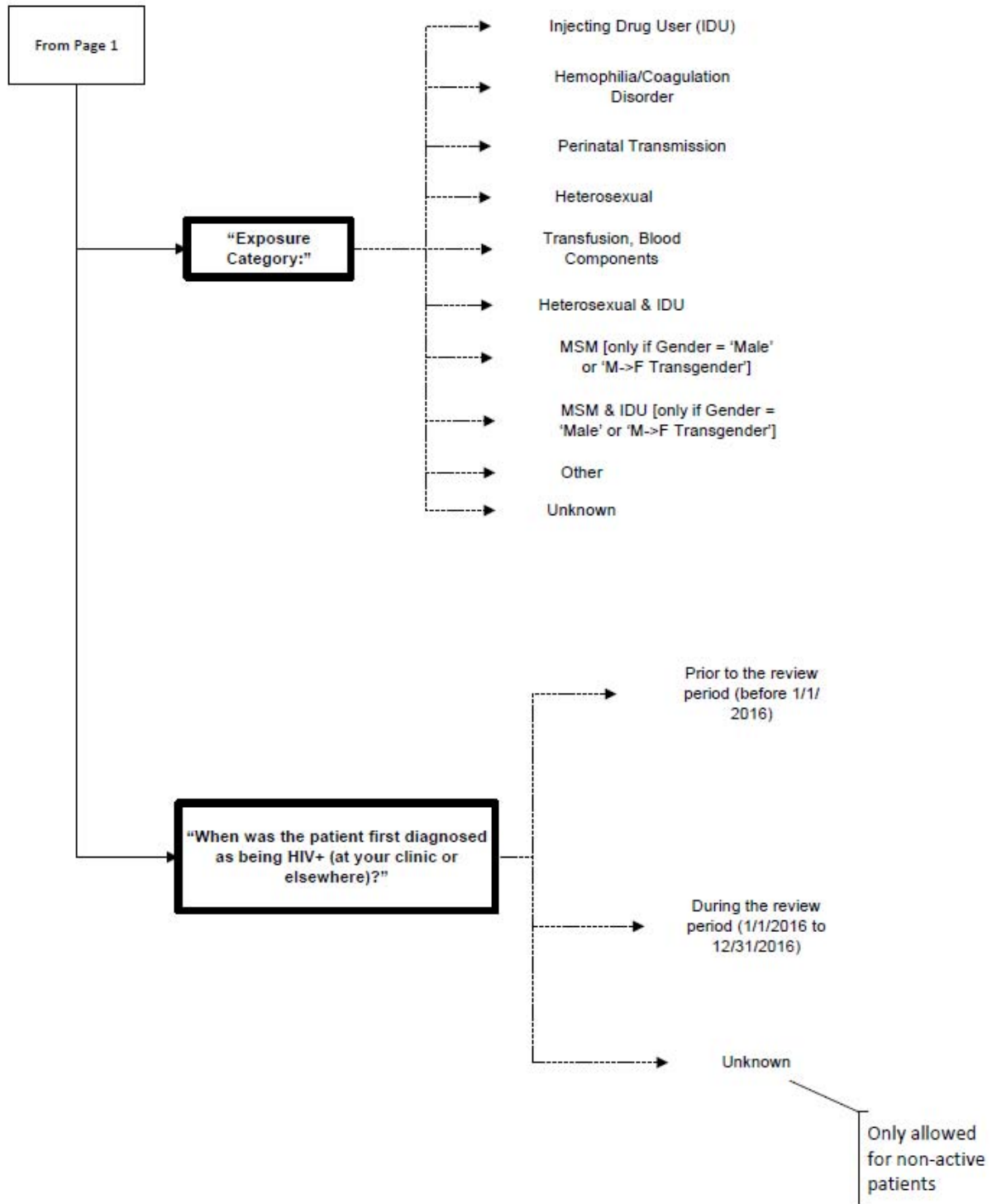
This appendix is intended for chart abstractors, data specialists or others interested in understanding the dynamics of the data submission process and the relationship between the data entry screens in eHIVQUAL and the data import template. Please also see the “eHIVQUAL Adult and Ambulatory Care Definitions” document and the “eHIVQUAL User’s Guide” for additional details.

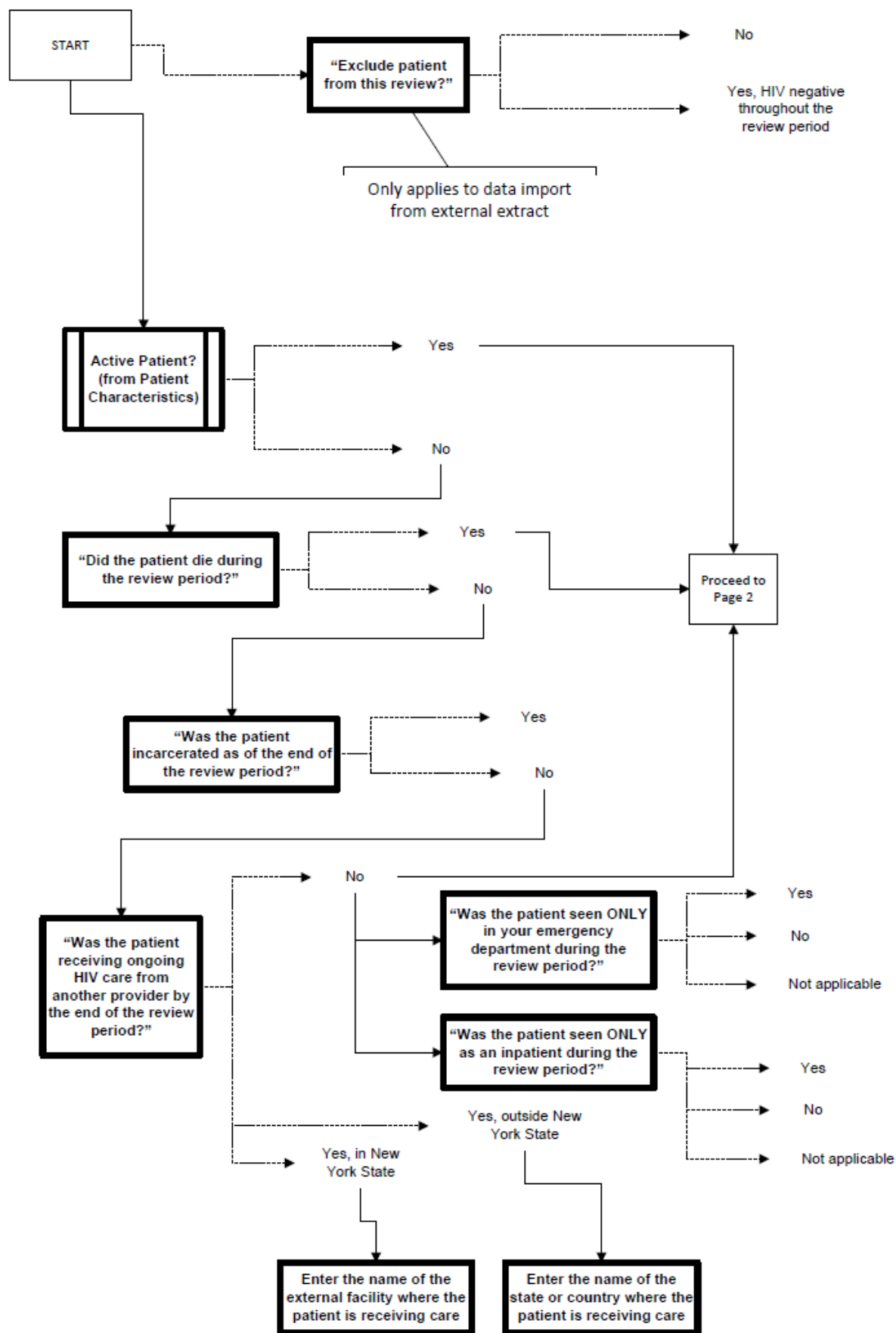
Indicator Algorithm Key



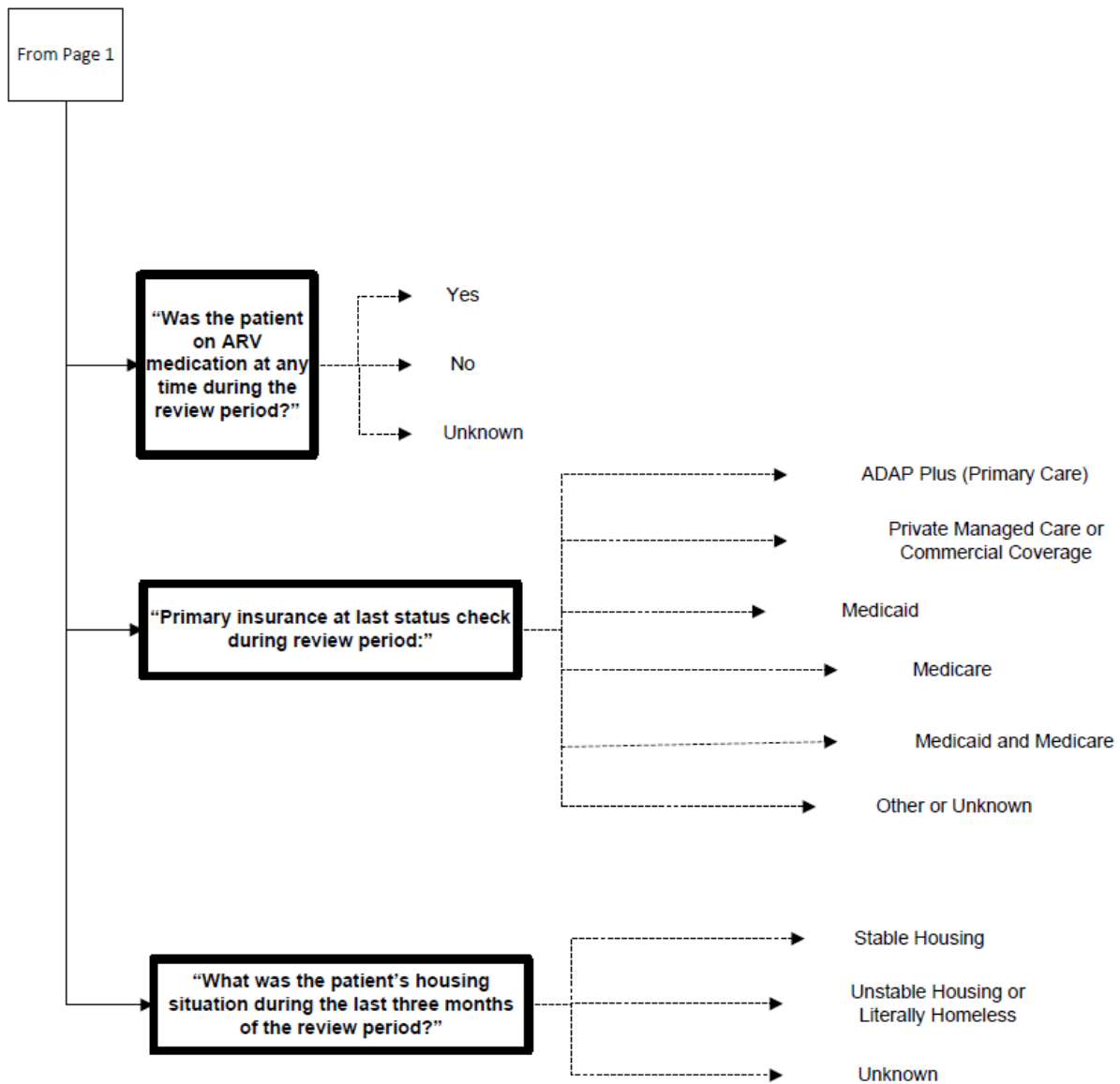
Patient Characteristics Algorithm (page 1 of 2)

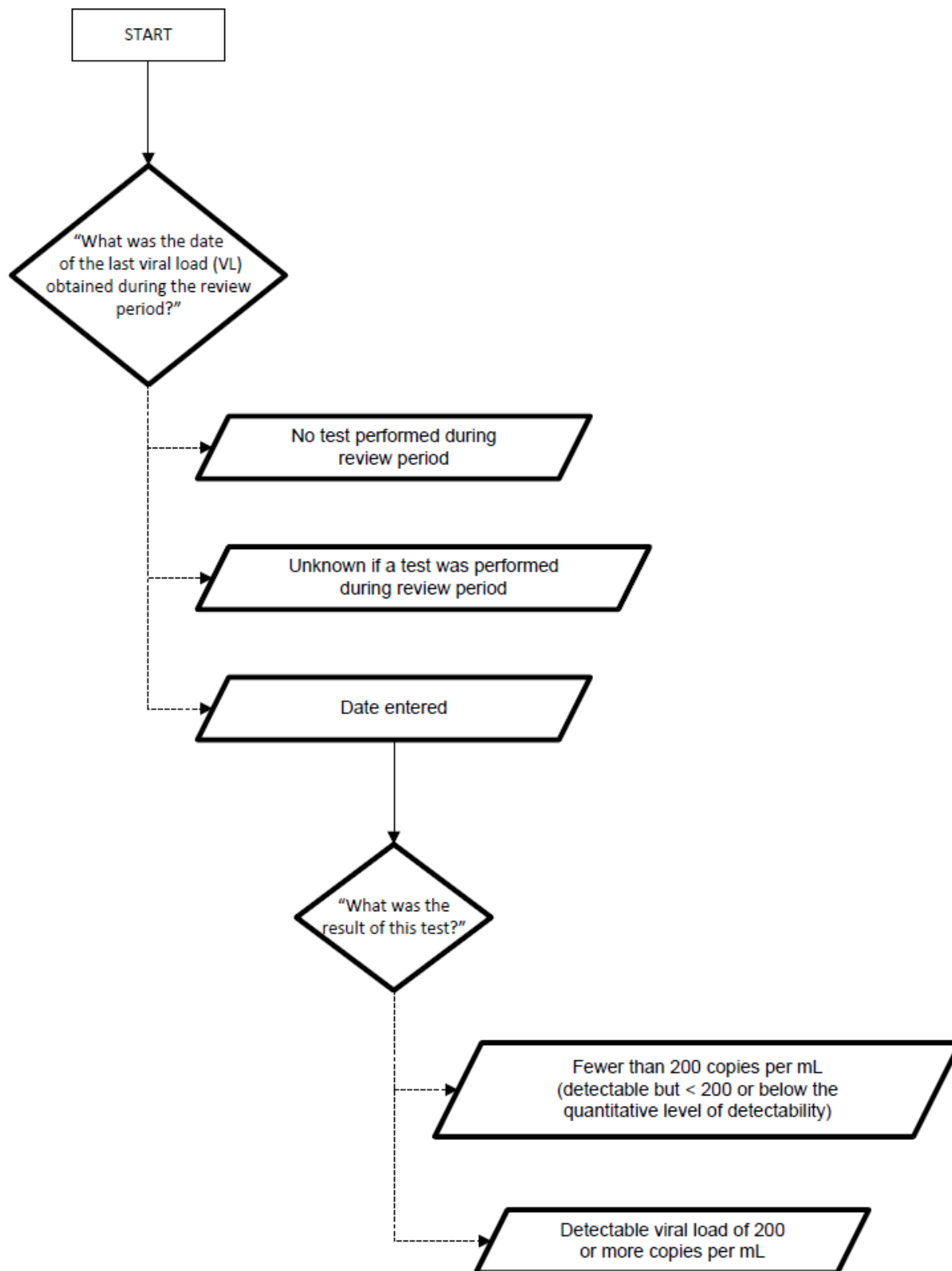


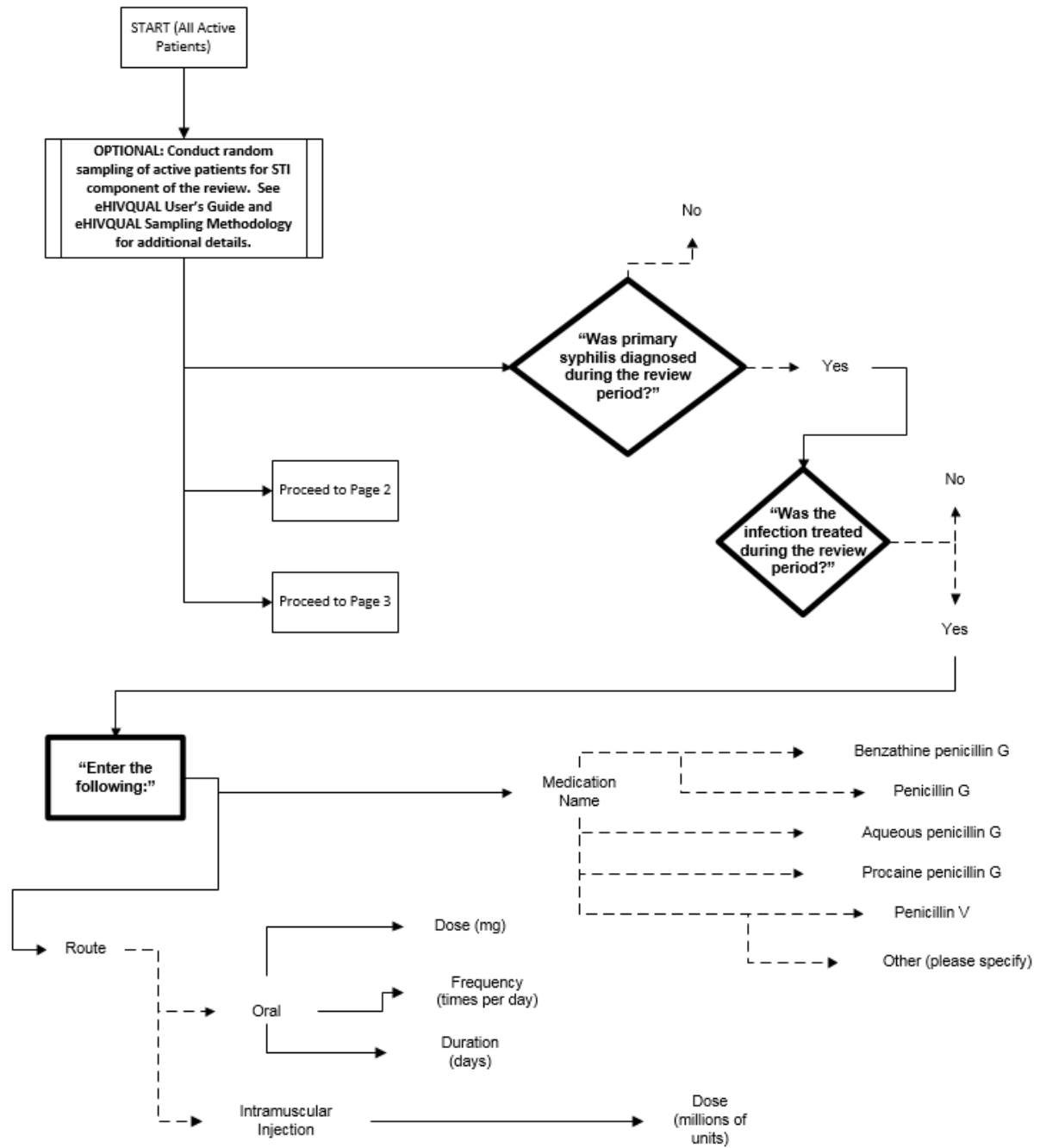


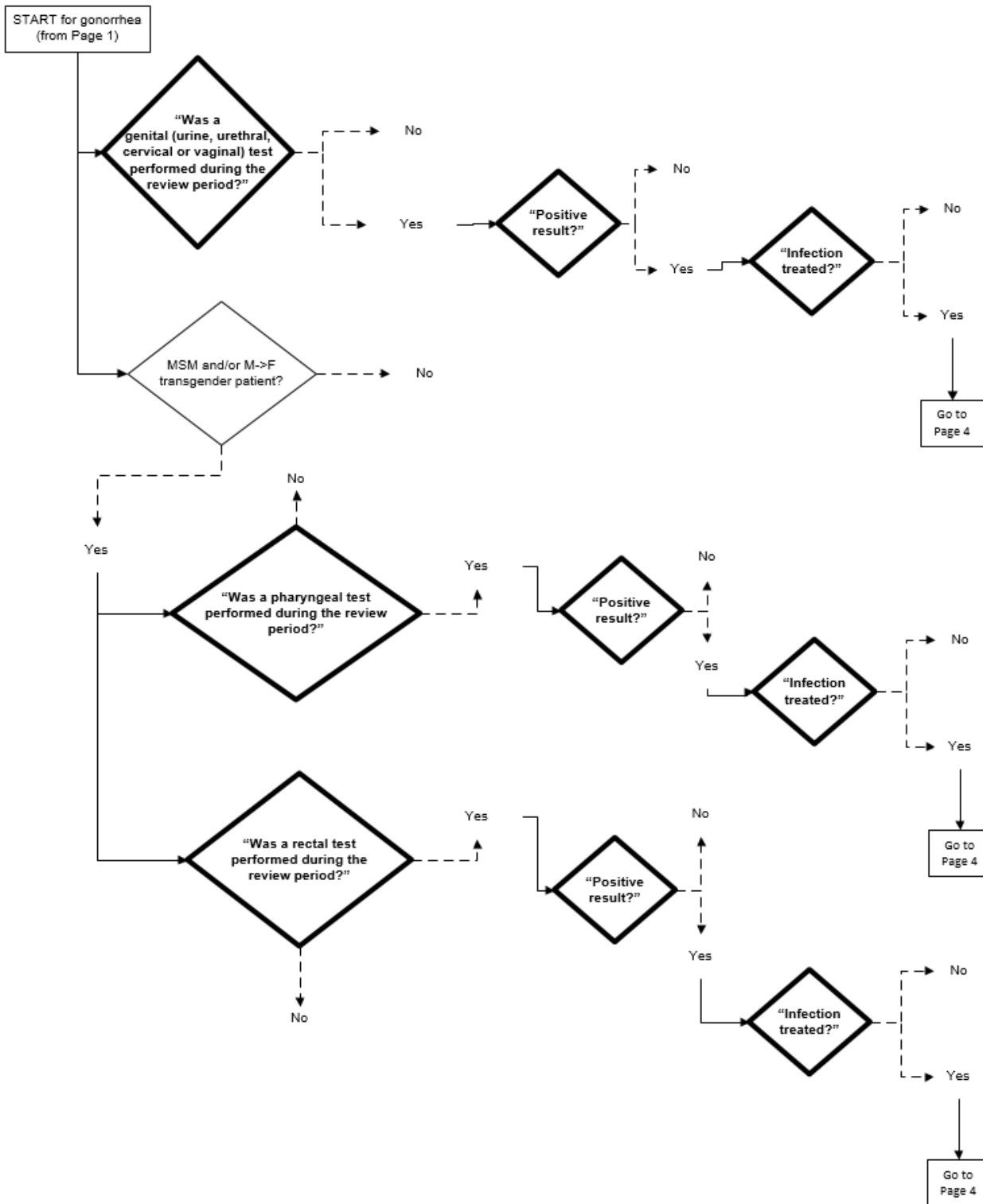


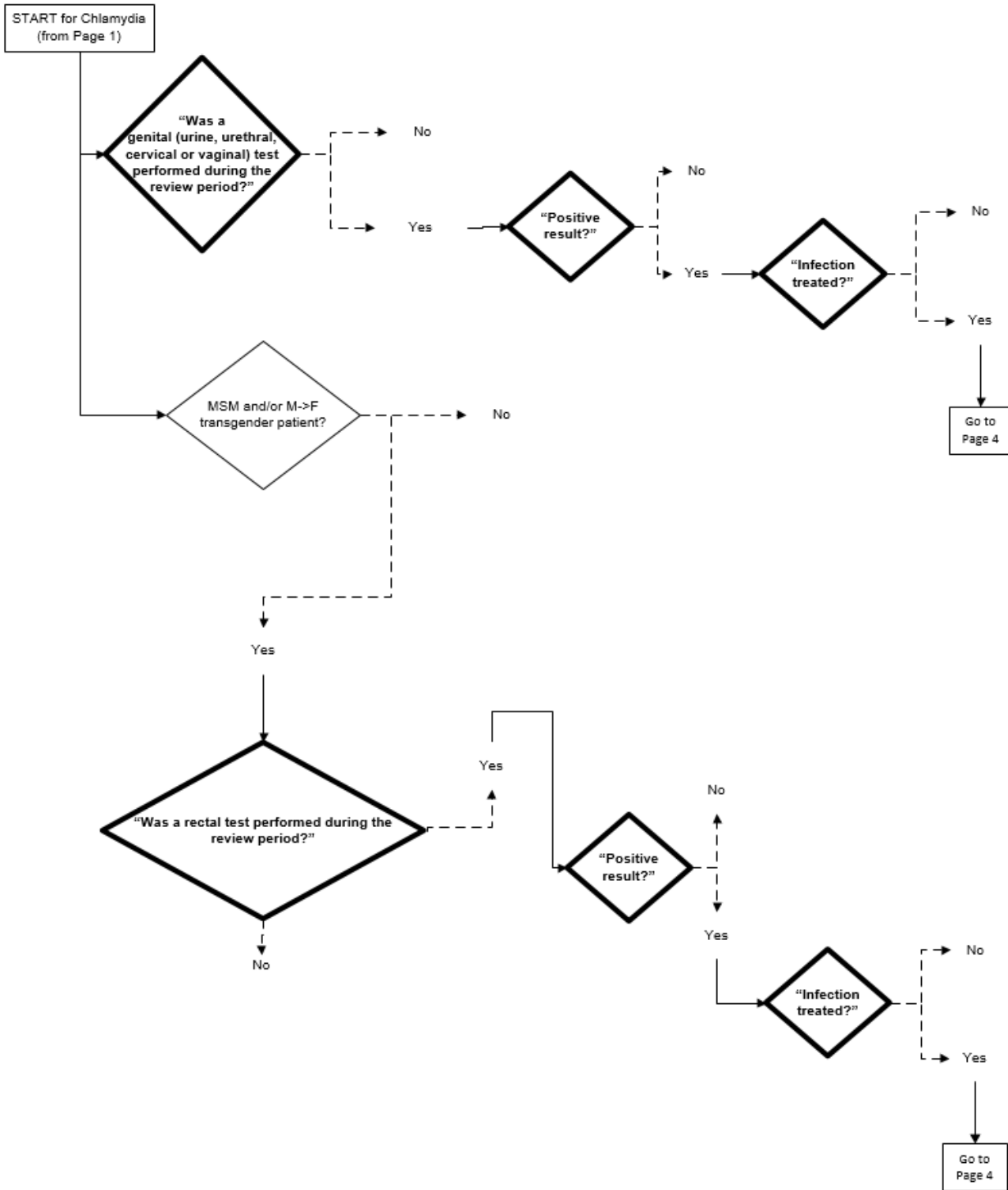
Patient Profile Algorithm (page 2 of 2)





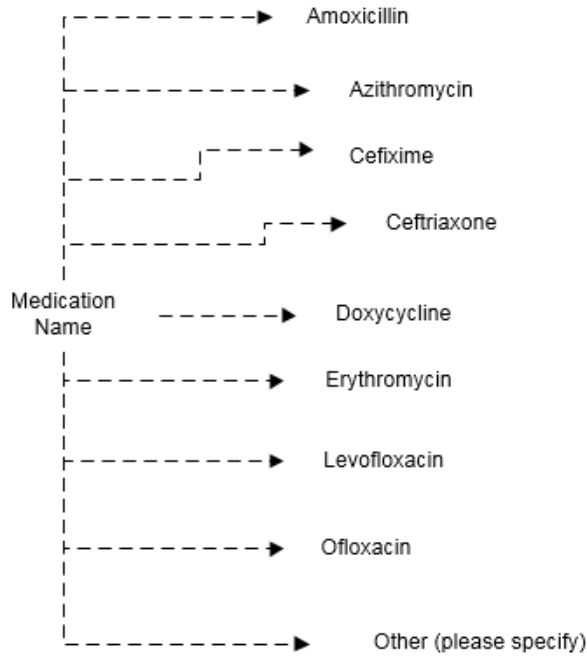






These questions are asked whenever a patient has been treated for a gonorrhea or Chlamydia infection (continuation from Page 2 or Page 3)

**“Enter the following:”
[four rows provided to allow for combination therapy and/or second-line treatment]**



Route

